

Door Closer - Surface Mounted

DC347

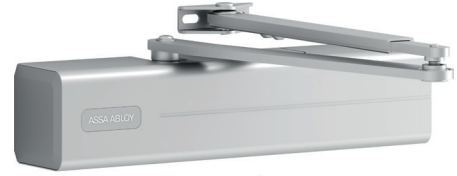
ASSA ABLOY

Door Closer

DC347

Description:

- Rack and pinion door closer with extra strong link arm L197
- Certified in compliance with EN 1154, size 5 - 7
- Suitable for fire and smoke protection doors
- For single action doors up to 1600 mm wide



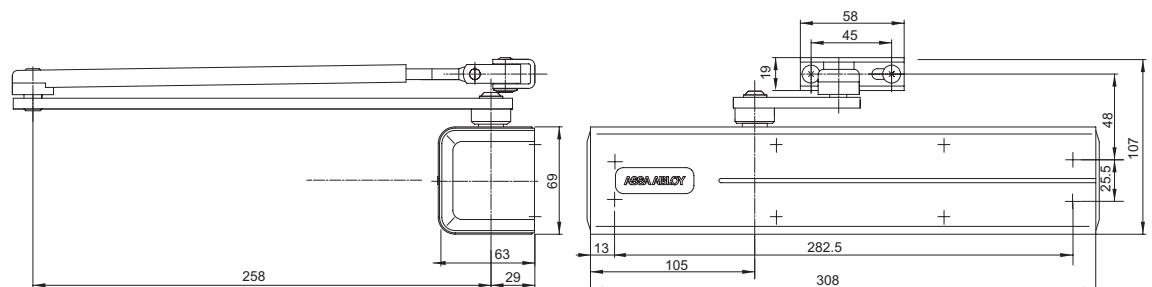
Characteristics:

- For single action doors up to 1600 mm wide
- Can be used with integrated concealed mounting plate, suitable for fire and smoke protection doors
- Can be used for left and right handed doors
- Link arm height-adjustable up to 14 mm
- Closing speed, latching speed and backcheck adjustable via front facing regulating valves
- Thermodynamic valves for consistent performance
- Variable adjustable closing force
- Opening angle up to 180°
- For heavy door applications
- Standard colours: silver EV1; white, similar to RAL9016; brown, similar to RAL8014; black, similar to RAL9005
- Customized finishes available on request

CE	Abloy Oy PO Box 108 80101 Joensuu, Finland		04			
	1162-CPD-0131	EN1154:1996+A1:2002	4	8	7 5	1 1 3

Characteristics for special model DC300DA:

- Delayed closing adjustable from front
- Other features as in Model DC300



Door Closer - Surface Mounted

DC347

ASSA ABLOY

Technical attributes	
Door width up to	1600 mm
Closing force	EN 5-7
Handing	Left / right handed
Closing speed	Variable between 180°-0°
Latching speed	Variable between 15°-0°
Backcheck	Variable above 75°
Weight	2.2 kg
Height	69 mm
Depth	63 mm
Length	306 mm
Suitable for fire doors	Yes
Certified in compliance with	EN 1154
CE marking for building products	Yes

Door Closer

Specifications for DC347

Specifications:

ASSA ABLOY Door Closer DC347 featuring rack and pinion technology in compliance with EN 1154

- Closing power variable adjustable, EN size 5 - 7, for doors up to 1600 mm wide
- Closing speed, latching speed and backcheck adjustable via front facing regulating valves
- Can be used with integrated concealed mounting plate, suitable for fire and smoke protection doors
- CE approved
- 14 mm height adjustable arm system for ease of fitting
- Suitable for left and right handed doors

Finishes

- Silver EV1
- White, similar to RAL9016
- Black, similar to RAL9005
- Brown , similar to RAL8014
- Customized finish

Accessories

- Extra strong link arm L197
- Mounting plate A126
- Angle bracket A107

Door Closer - Surface Mounted

DC347

ASSA ABLOY

Ordering Code

Designation / Item	Order no.
DC347, EN size 5-7, silver EV1	DC347-----DEV1-
DC347, EN size 5-7, white, similar to RAL9016	DC347-----D9016
DC347, EN size 5-7, brown, similar to RAL8014	DC347-----D8014
DC347, EN size 5-7, black, similar to RAL9005	DC347-----D9005
DC347, EN size 5-7, stainless steel ASSA ABLOY design	DC347-----D35--
DC347, EN size 5-7, stainless steel full cover	DC347-1---D35--
DC347, EN size 5-7, customised finish	DC347-----DXXXX
Link arm L197, silver EV1	DCL197-----EV1-

Designation / Item	Order no.
Link arm L197, white, similar to RAL9016	DCL197-----9016
Link arm L197, brown, similar to RAL8014	DCL197-----8014
Link arm L197, black, similar to RAL9005	DCL197-----9005
Link arm L197, stainless steel	DCL197-----35--
Link arm L197, customised finish	DCL197-----XXXX
Angle bracket A107, silver EV1	DCA107-----EV1-
Angle bracket A107, customised finish	DCA107-----XXXX
Mounting plate A126, galvanised	DCA126-----40