

Sensor-switched LED indoor light - Professional Line

RS PRO 5100 SC 5C

5 Core
EAN 4007841 079185
Article number 079185



Function description

Our engineers agreed: The new damp-proof light should be simple and good. Easy to install and maintain, good in energy efficiency, function and quality. The moisture-proof luminaire the world has been waiting for. Robust, highly functional, child's play to install, wireless to network and ultimately convenient to adjust via smartphone. 360° high-frequency sensor, 10 m range. With 4250 lm at 31 W and 4000 K. No unintentional switch-off thanks to presence mode.

Technical specifications

Dimensions (L x W x H)	1370 x 87 x 58 mm
Mains power supply	220 – 240 V / 50 – 60 Hz
Sensor Technology	High frequency
Transmitter power	
Output	31 W
Power consumption	0,41 W
Interconnection	Yes
Luminous flux total product	4250 lm
Total product efficiency	137 lm/W
Colour temperature	4000 K
Colour variation LED	SDCM3
Colour Rendering Index	80-89
Lamp	LED cannot be replaced
LED life expectancy (max. °C)	60000 h
Drop in luminous flux in accordance with LM80	L80B10
LED cooling system	Passive Thermo Control
With motion detector	Yes
Detection angle	360 °
Angle of aperture	160 °

Electronic scalability	Yes
Twilight setting	2 – 2000 lx
Time setting	5 s – 60 Min.
Basic light level function	Yes
Basic light level function time	1-60 min
Main light adjustable	10 - 100 %
Impact resistance	IK07
IP-rating	IP66
Protection class	II
Ambient temperature	-20 – 40 °C
Housing material	Plastic
Cover material	Plastic, structured
Manufacturer's Warranty	5 years
Settings via	Bluetooth
Version	5 Core
Total harmonic distortion (THD)	12,5
Power factor	0,94
Photobiological safety in accordance with EN 62471	RG1
PU1, EAN	4007841079185

Sensor-switched LED indoor light - Professional Line

RS PRO 5100 SC 5C

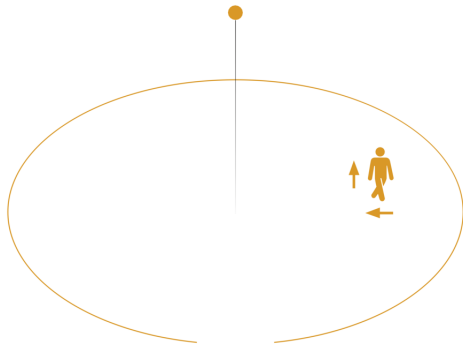
5 Core

EAN 4007841 079185

Article number 079185

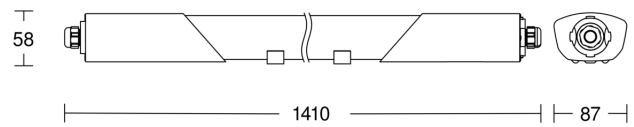


Detection Zone

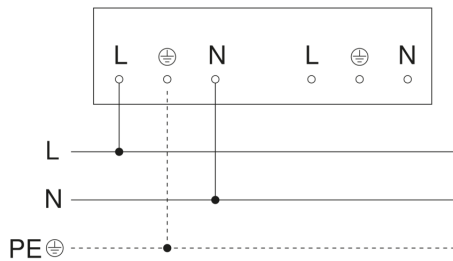


Mögliche Montagehöhe: – 3,50 m
Orange: radial und tangential

Dimension Drawing



Master circuit diagram



RS PRO 5100 SC 5C

5 Core

EAN 4007841 079185

Article number 079185

Master/slave and master/master interconnection circuit diagram

