

1W DUOX PLUS MEMOV CITY VEO WIFI KIT



Reference: 49071

Fermax presents the new VEO WIFI DUOX PLUS kits **for single-family houses, offices and businesses** .

The kits include all the necessary materials for installation: CITYLINE entrance panel with Memokey...

DESCRIPTION

Fermax presents the new VEO WIFI DUOX PLUS kits **for single-family houses, offices and businesses** .

The kits include all the necessary materials for installation: CITYLINE entrance panel with Memokey keyboard, VEO WIFI monitor and power supply.

In addition, they work with DUOX PLUS, a fully digital door entry and video door entry system and technology on two non-polarized wires, which simplifies their installation while maintaining the highest quality in the product and design,

They include the VEO WIFI DUOX PLUS monitor as standard, equipped with a Wi-Fi connection that **allows calls to be forwarded to mobile devices** .

Thanks to the **Fermax BLUE application** , available for free in the Play Store and App Store, the video door entry functions can be managed directly from a mobile or tablet, to connect to your home, wherever you are. By connecting your WiFi DUOX PLUS monitors with the BLUE app, a range of possibilities will open up. Of all of them we highlight two that will be key: Divert calls from the video door entry unit to your mobile and open the door to the house from a distance.

They also come as a standard with the **Photocaller** function , which automatically captures an image of the caller. If the user decides to activate this function, the monitor stores up to 150 images, indicating the date and time when they were taken. When the maximum capacity has been reached, taking a new photo will erase the first one stored. The screen always indicates if there are photos not displayed or if the date / time are not configured.

The **VEO WIFI DUOX PLUS monitor** is made of high impact ABS plastic.

Includes a 4.3 "widescreen color display (16: 9).

The unique and exclusive design of the handset incorporates a magnet that makes it easy for the user to position it, ensuring a correct hanging at the end of the conversation.

Its balanced design of pure lines is distinctive, modern and minimalist.

The entrance panel includes an integrated Memokey keyboard for opening the door by dialing a PIN code (up to 100 codes, 100 users).

DUOX PLUS is the new digital technology that exceeds all expectations. Because it makes the difficult easy.

TECHNICAL SPECIFICATIONS

It includes:

- ◆ 73881 1W DUOX PLUS MEMOVISION CITY PANEL
- ◆ 8855 CITY FLUSH BOX S5
- ◆ 9446 DUOX VEO WIFI 4.3" MONITOR
- ◆ 9447 DUOX VEO/VEO-XS CONNECTOR
- ◆ 4825 POWER SUPP. UNIT+FILTER DIN10 24VDC-2.5A
- ◆ 4802 P.S.U. DIN4 230VAC/12VAC-1A

Video:

- Sensor: 1/3 "CMOS color.
- Effective pixels>, 340K. (the camera captures 720x480)
- Minimum external lighting: 0 lux. Since it has LEDs, no additional lighting is required.
- S / N>, 45dB.
- Frame rate 25 fps.
- Resolution>, 368x288 pixels.
- Video codec: H264 Highline Profile
- Auto iris.
- Auto BLC.
- Angle of vision 100° horizontal, 80° vertical.
- Fish eye correction.
- Color night vision through white LEDs.
- Pan &, Tilt digital zoom.

Weight: 3,2938296 kg

Size of product when packed: 26x24x15 cm

EAN 13: 8424299490717

Included products



DUOX PLUS VEO WIFI 4.3" MONITOR

Ref: 9446

VEO WIFI is equipped with a Wi-Fi connection that allows calls forwarding to mobile devices. Thanks to the Fermax BLUE app, available free of charge...

[+ INFO](#)

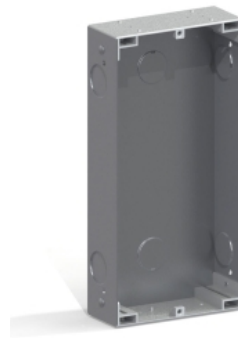


DUOX PLUS CONNECTOR

Ref: 9447

Necessary to mount the monitor on the wall surface.

[+ INFO](#)



CITY FLUSH BOX S5

Ref: 8855

In order to install a panel it is necessary to place a box in the wall where we will subsequently fix the panel.

The flushboxes are manufactured in...

[+ INFO](#)



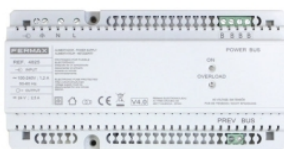
1W DUOX PLUS MEMOVISION CITY PANEL

Ref: 73881

Installed in the accesses to the building, they allow communication with the dwellings, opening the door, calling the concierge, etc.

CityLine outdoor...

[+ INFO](#)



POWER SUPP. UNIT+FILTER DIN10 24VDC-2.5A

Ref: 4825

Used to power the different equipment in a DUOX PLUS Fermax installation.

Constructed in self-extinguishing VO material. Includes a set of covers...

[+ INFO](#)



P.S.U. DIN4 230VAC/12VAC-1A

Ref: 4802

Used to power the different equipment in a Fermax installation.

Constructed in self-extinguishing VO material. Includes a set of covers to protect the...

[+ INFO](#)