

NEO-PIR-CRT

Digital Quad PIR Curtain Detector with Mirror Optics

The NEO-PIR-CRT mirror curtain detector provides solid curtain coverage of max 8m length by 3m height.

The NEO-PIR-CRT may be used for perimeter protection by setting up detection “curtains” along walls , windows, skylights. It can also be used as internal invisible barrier and as pet-alley curtain.

The Mirror detector NEO-PIR-CRT use varifocal mirror that improves the focus and the level of energy received by the Pyro Sensor .The electronic of the detector is optimized to virtually eliminate false alarms .

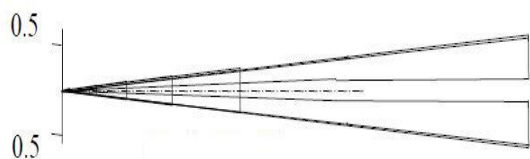
FEATURES

- High Precision Mirror Optics
- Selectable detection coverage up to 8m
- Selectable detection range (4-6m or 6-8m)
- Solid curtain coverage
- Temperature compensation
- Dual element Pyro Sensor
- Advanced component technology
- Height installation calibrations free

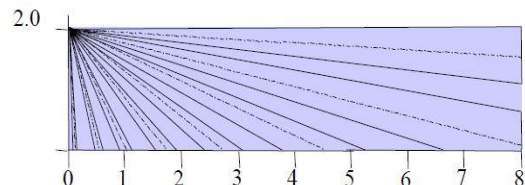


DETECTION PATTERN

Top View



Side View



STANDARDS COMPLIANCE

EN50130-4
EN50131-1, EN50131-2-2
Security Grade 2, Environmental Class II

SPECIFICATION

Detection Method	Dual element PIR + Mirror Optics
Power Input	9 to 16 VDC
Current Draw	Standby: 2 mA ($\pm 5\%$) Active with LED: 3.5 mA ($\pm 5\%$)
Alarm Output	N.C 28VDC 0.1 A with 10 Ohm series protection resistor
Tamper Switch	N.C 28VDC 0.1A with 10 Ohm series protection resistor - open when cover is removed
LED Indicators	LED is ON during alarm
Warm Up Period	20 sec (± 5 sec)
Operating Temperature	-20°C to 50°C
RFI Protection	10V/m 10 - 1000MHz
Dimensions	120.4mm x 30.7mm x 36.7mm
Weight	40grs
Part Number	0017860